

The logo consists of the letters 'L', 'E', 'R', and 'U' arranged in a 2x2 grid. The 'L' and 'E' are in the top row, and the 'R' and 'U' are in the bottom row. The 'R' is a vibrant orange color, while the 'L', 'E', and 'U' are a dark grey. The letters are in a bold, serif typeface.

LE  
RU

PUSHING  
THE FRONTIERS  
OF INNOVATIVE  
RESEARCH

University of Amsterdam

Universitat de Barcelona - University of Cambridge

University of Copenhagen - Trinity College Dublin - University of Edinburgh

University of Freiburg - Université de Genève - Universität Heidelberg

University of Helsinki - Universiteit Leiden

KU Leuven - Imperial College London - University College London

Lund University - University of Milan - Ludwig-Maximilians-Universität München

University of Oxford - Sorbonne University

Université Paris-Sud - University of Strasbourg - Utrecht University

University of Zurich

# Who we are (I)

- An association of **European research-intensive universities**;
- Committed to the values of **high quality teaching**;
- Within an environment of **internationally competitive research**.



## Who we are (II)

- Non-profit organisation
- Founded in 2002
- 23 members



# Commitment

- **Encourage education** through an awareness of the frontiers of human understanding;
- **Foster the creation of new knowledge through basic research** as the ultimate source of innovation in society;
- **Promote research across a broad front**, which creates a unique capacity to respond to new opportunities and problems.



# Purpose

- **Influence policy at European Union and Member State level**
  - EU: Commission, Parliament, Council, ERC, EIT, JRC, ERAC,...
  - MS: prime ministers, ministers of research, ministers of finance
- **Develop best practices**
  - Between 23 members
  - Institutional reflection, exchange of experience, collaborative actions
- **Relevance for all Research-Intensive Universities**
  - Europe
  - Global



# Members (I)



- Based in 12 European countries
- Membership only upon invitation
- Research-Intensive, Comprehensive

# Members (II)

## LERU members:

University of Amsterdam  
 Universitat de Barcelona  
 University of Cambridge  
 University of Copenhagen  
 Trinity College Dublin  
 University of Edinburgh  
 University of Freiburg  
 Université de Genève  
 Universität Heidelberg  
 University of Helsinki  
 Universiteit Leiden  
 KU Leuven  
 Imperial College London  
 University College London  
 Lund University  
 University of Milan  
 Ludwig-Maximilians-Universität München  
 University of Oxford  
 Sorbonne University  
 Université Paris-Sud  
 University of Strasbourg  
 Utrecht University  
 University of Zurich





# Members (III)

<b>Belgium</b>	KU Leuven	<b>Netherlands</b>	University of Amsterdam Leiden University Utrecht University
<b>Denmark</b>	University of Copenhagen	<b>Spain</b>	Universitat de Barcelona
<b>Finland</b>	University of Helsinki	<b>Sweden</b>	Lund University
<b>France</b>	Sorbonne University Université Paris-Sud University of Strasbourg	<b>Switzerland</b>	Université de Genève University of Zurich
<b>Germany</b>	University of Freiburg Universität Heidelberg LMU München	<b>United Kingdom</b>	University of Cambridge University of Edinburgh Imperial College London University College London University of Oxford
<b>Ireland</b>	Trinity College Dublin		
<b>Italy</b>	University of Milan		

# Impact (I)

In 2016 LERU Universities  
contributed

**€100 billion GVA**

to the European economy and  
supported

**1.3 million jobs**



# Impact (II)

## LERU employees generate wider employment

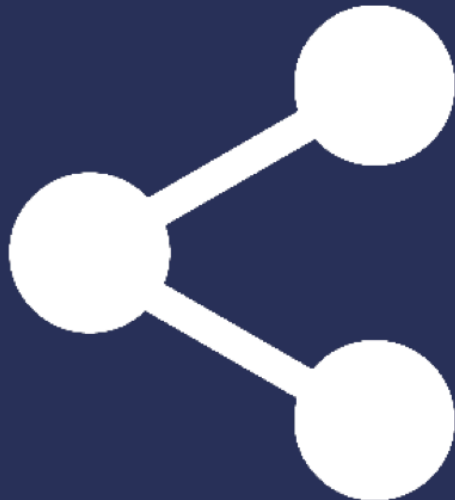
Every job directly created by the LERU Universities supported almost **6 jobs** across Europe



# Impact (III)

**The LERU Universities distribute their research through  
interactions with industry**

---



LERU Universities generated **€33.0bn GVA** in Europe by transferring their research into industry through **licenses, spin outs** and **services to business**

# Impact (IV)

---

**The students of LERU Universities play a significant role  
in their economies**

---



In 2016, there were **789,000 full time students**, who generated **€14.1 bn GVA** in Europe through their spending, employment and placements

# EU Policy (I)

## Priorities of Commissioner Moedas

Open Innovation  
Open Science  
Open to the World



# EU Policy (II)

HORIZON 2020



ERA



# EU Policy (III)

## Priorities of Commissioner Navracsics



ERASMUS+





# EU Policy (IV)

**Priorities of Vice-President Ansip**

**Digital Single Market**

---



# How we work

Proactive **policy development** and articulation through the publication of **papers**, **meetings** in Brussels and other activities



# Papers



- Position papers
- Advice papers
- Briefing papers
- Notes
- Statements
- Policy briefs

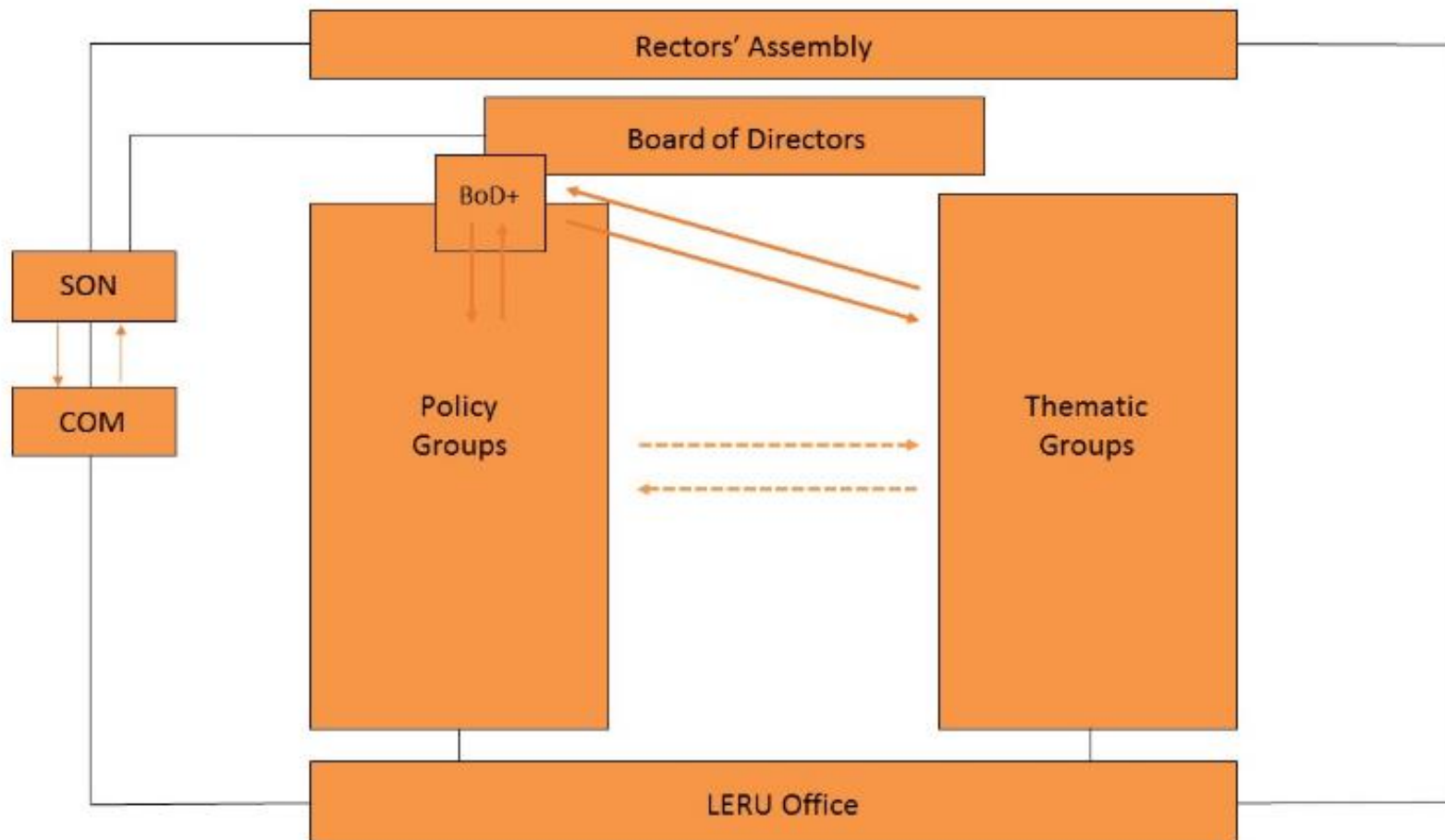
# Policy Impact

- General Data Protection Regulation
- Open Access to publications
- Horizon 2020
- FP9
- EU Budget / EFSI
- EU Copyright reform
- Animal Research
- Gender equality

And many other dossiers ...



# Organisation



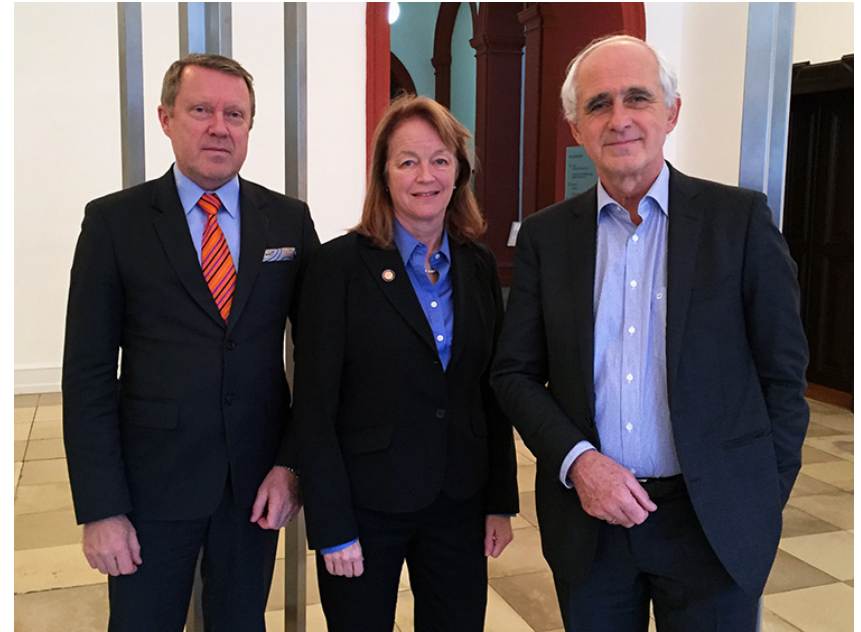
# Rectors' Assembly

- **Highest decision-making** body
- Each member represented by its **head of institution**
- Meets **twice a year**
  - May 2018: University of Edinburgh
  - November 2018: Trinity College Dublin



# Board of Directors

- **Implements decisions** of the Rectors' Assembly
- Monitors the **budget**
- Composition
  - **Bert van der Zwaan (Chair)**, Rector Magnificus of Utrecht University
  - **Alice Gast**, President of Imperial College London
  - **Jukka Kola**, Rector of the University of Helsinki



## BoD+

- Consists of the members of the **BoD** and the **chairs** of the **nine policy groups**
- Develops LERU **policy positions** along a broad range of topics
- Meets once a year
- Chaired by the LERU Chair



# Policy Groups (I)

- Representatives of all member universities
- Responsible for overall, **high-level policy development**
- Operate on a continuous basis
- Led by a steering group with comprehensive support of a LERU Policy Officer



# Policy Groups (II)

- Biomedicine/Life Sciences
- Doctoral Studies
- Enterprise & Innovation
- European Research Project Managers
- Information & Open Access
- Learning & Teaching
- Natural Sciences
- Research
- Social Sciences & Humanities



# Thematic Groups (I)

- Address a **specific topic**
- Operate on activity-driven, self-organising and voluntary basis
- Led by a steering group with specific support from the LERU Office



# Thematic Groups (II)

- Alumni
- Animals Used for Scientific Purposes
- Charitable Funding
- Crime & Social Control
- E-Learning
- Ethics
- Law
- Gender & Diversity
- Research Integrity
- Research Careers & HR
- Theology & Religious Studies



# Network Groups

- Optimise **communication and information** management
- Close links with the LERU Office
- Supported by a LERU Policy Officer
- Directors of Communication
- Senior Officers



# Other activities

- LERU Network Events
- LERU Open Seminars
- LERU Law Portal & PhD Exchange Scheme
- LERU Doctoral Summer School



# Collaboration with other stakeholders & institutions

- ERA Platform
  - EARTO, EUA, Science Europe, CESAER, EU Life, TAFTIE, EIRMA, ERF, ERRIN, Eli
- ESF, Vitae, SwissCore, Yerun, the Guild, Atomium, ...

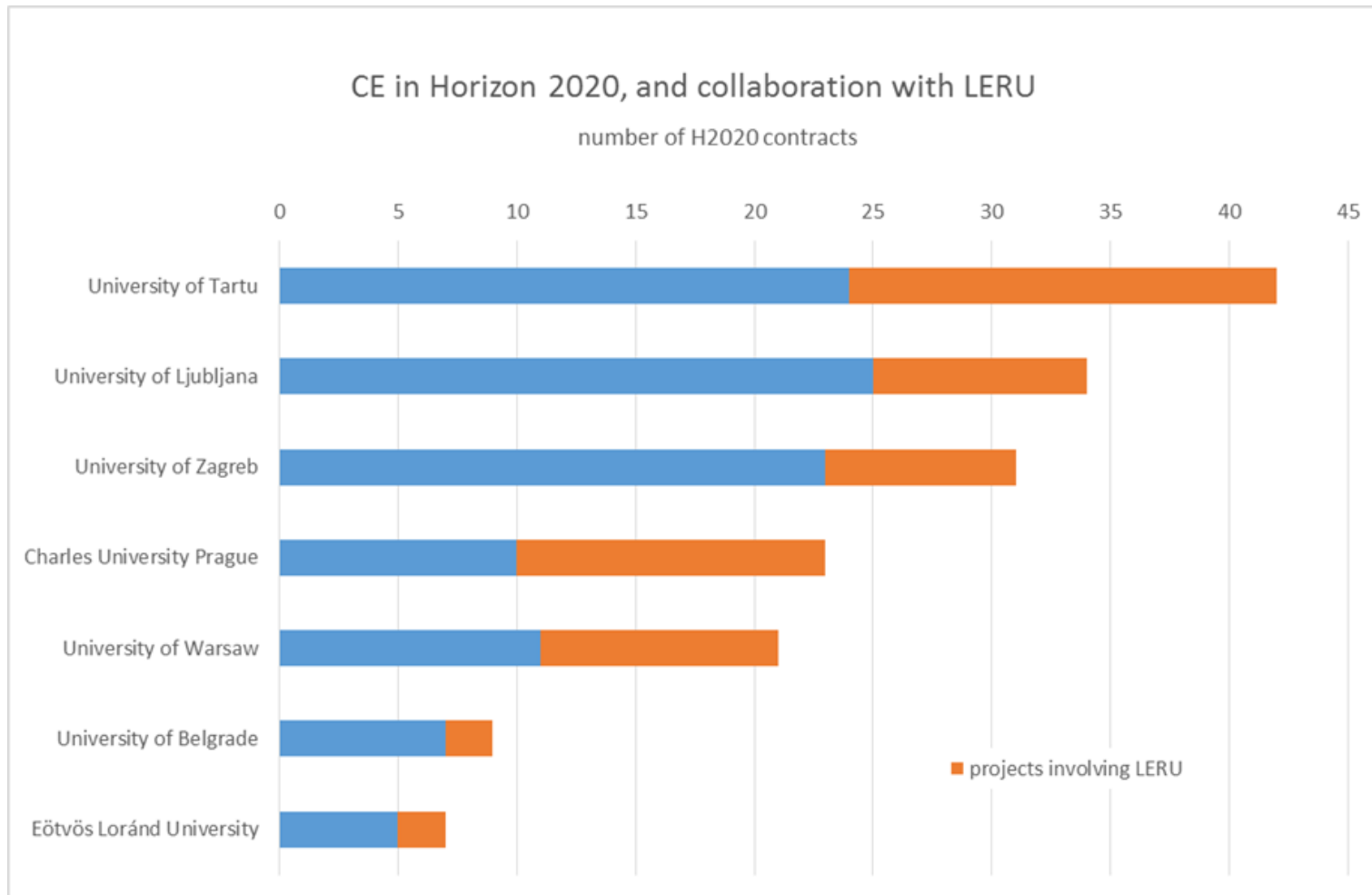


# CE7 (I)

Charles University Prague	Czech Republic
University of Ljubljana	Slovenia
University of Belgrade	Serbia
University of Warsaw	Poland
University of Tartu	Estonia
Eötvös Loránd University	Hungary
University of Zagreb	Croatia



# CE7 (II)



# International collaboration (I)

- Global network of networks of research universities
  - Australia, Go8
  - Canada, U15
  - China, C9
  - East Asia, AEARU
  - Europe, LERU
  - Germany, U15
  - Hong Kong 3
  - Japan, RU11
  - UK, Russell Group
  - US, AAU



Aim: Global Council of Research-Intensive Universities Networks

# International collaboration (II)

- United Nations
  - Consultative status with the UN Economic and Social Council
  - Member of the UN Academic Impact



# LERU Office (I)



# LERU Office (II)



## **Prof. Kurt Deketelaere, Secretary-General**

- Daily management of LERU
- Representation of LERU
- Head of the LERU Office

# LERU Office (III)

- Alea López de San Román, Policy Officer
- Bart Valkenaers, Policy Officer
- Claire Gray, Policy Officer
- Francesca Bucci, Administrative Officer
- Katrien Maes, Deputy Secretary-General
- Laura Keustermans, Senior Policy Officer
- Veerle Van Kerckhove, Administrative Coordinator and PA





# Contact

**League of European Research Universities (LERU)**  
**Minderbroedersstraat 8**  
**3000 Leuven**  
**BELGIUM**

**[www.leru.org](http://www.leru.org)**  
**[Info@leru.org](mailto:Info@leru.org)**

